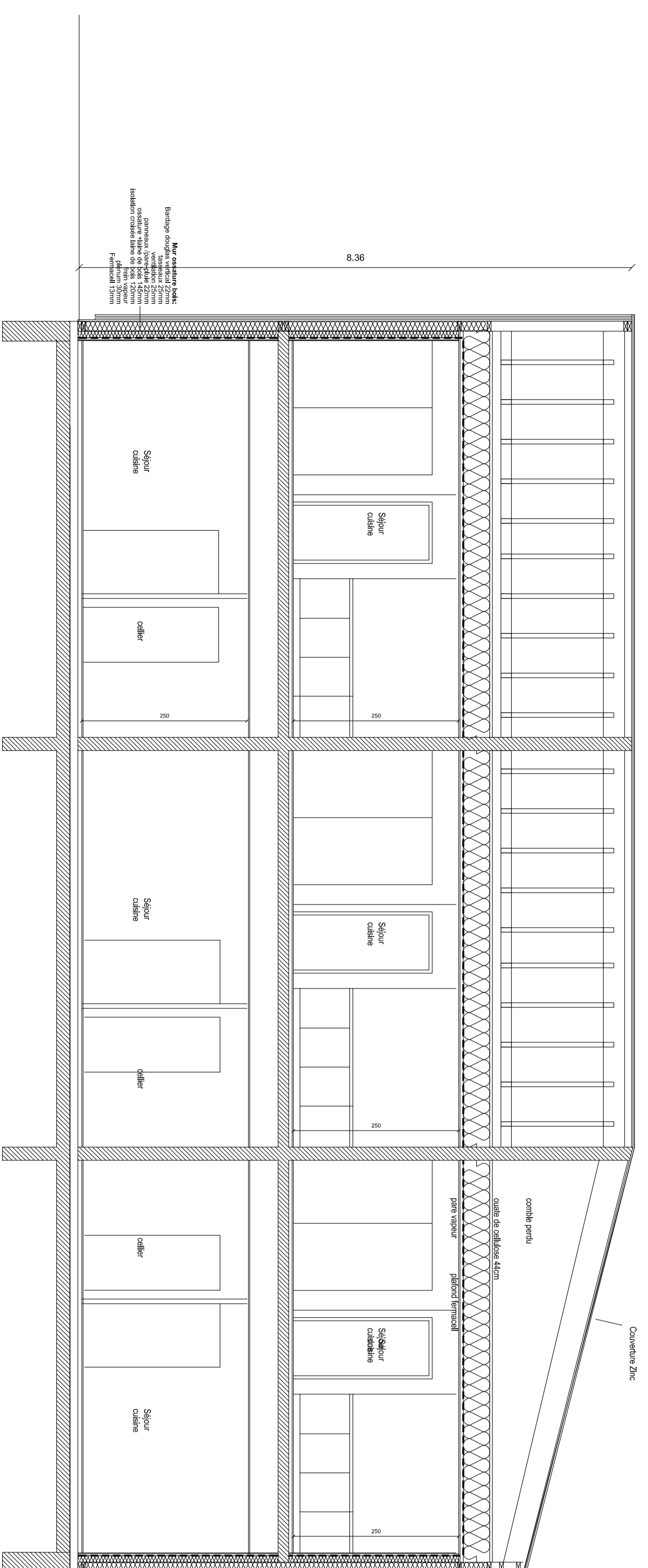
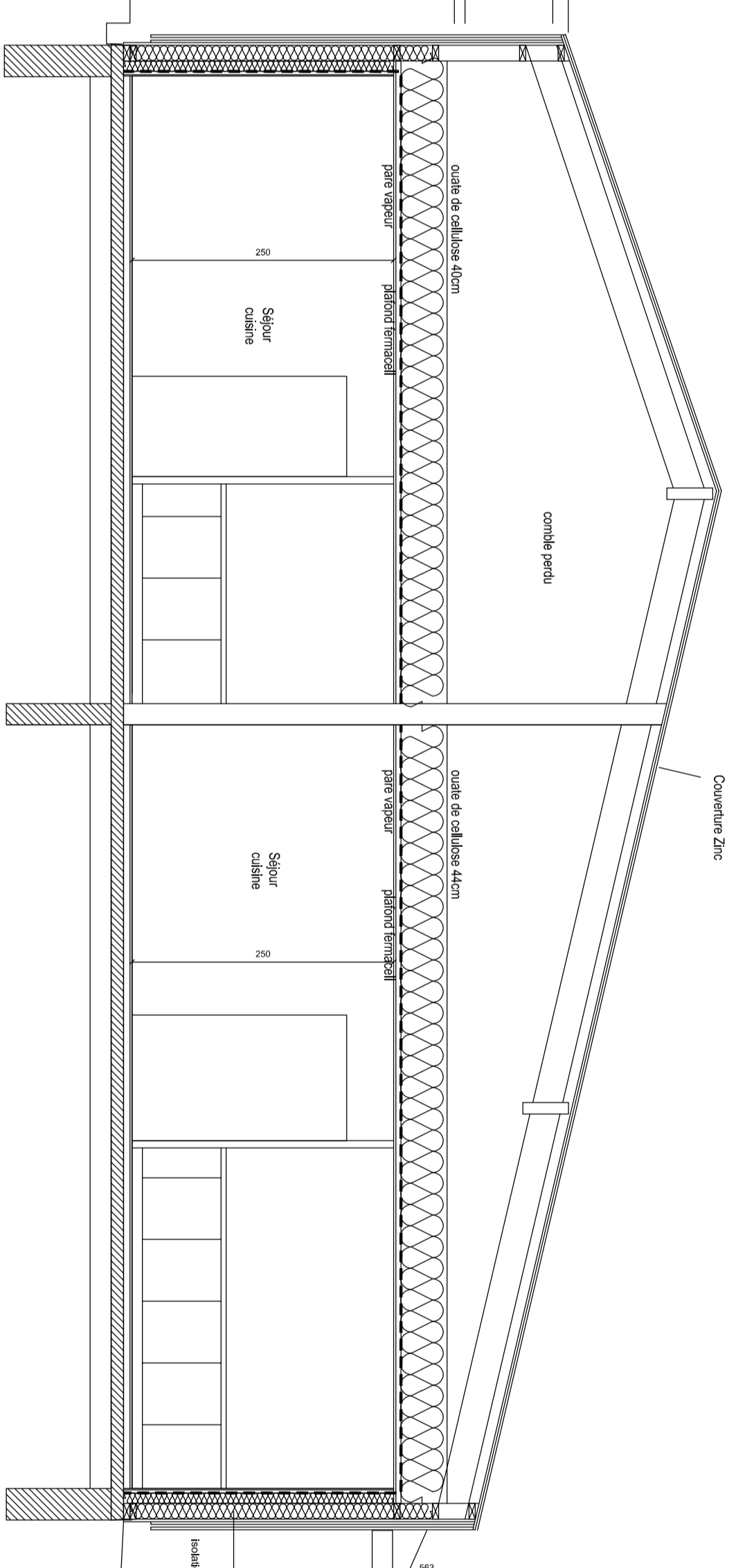


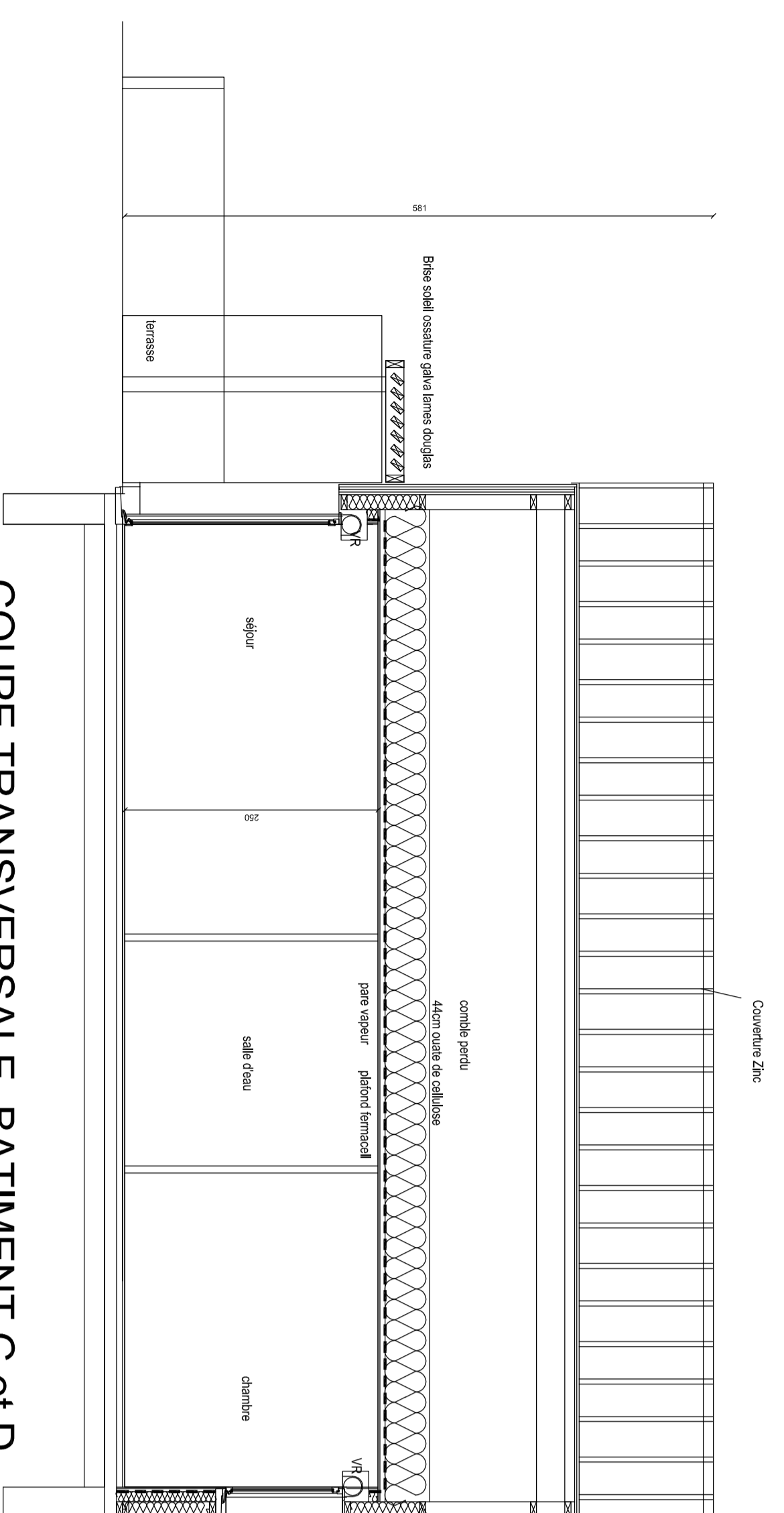
COUPE LONGITUDINALE BATIMENT C



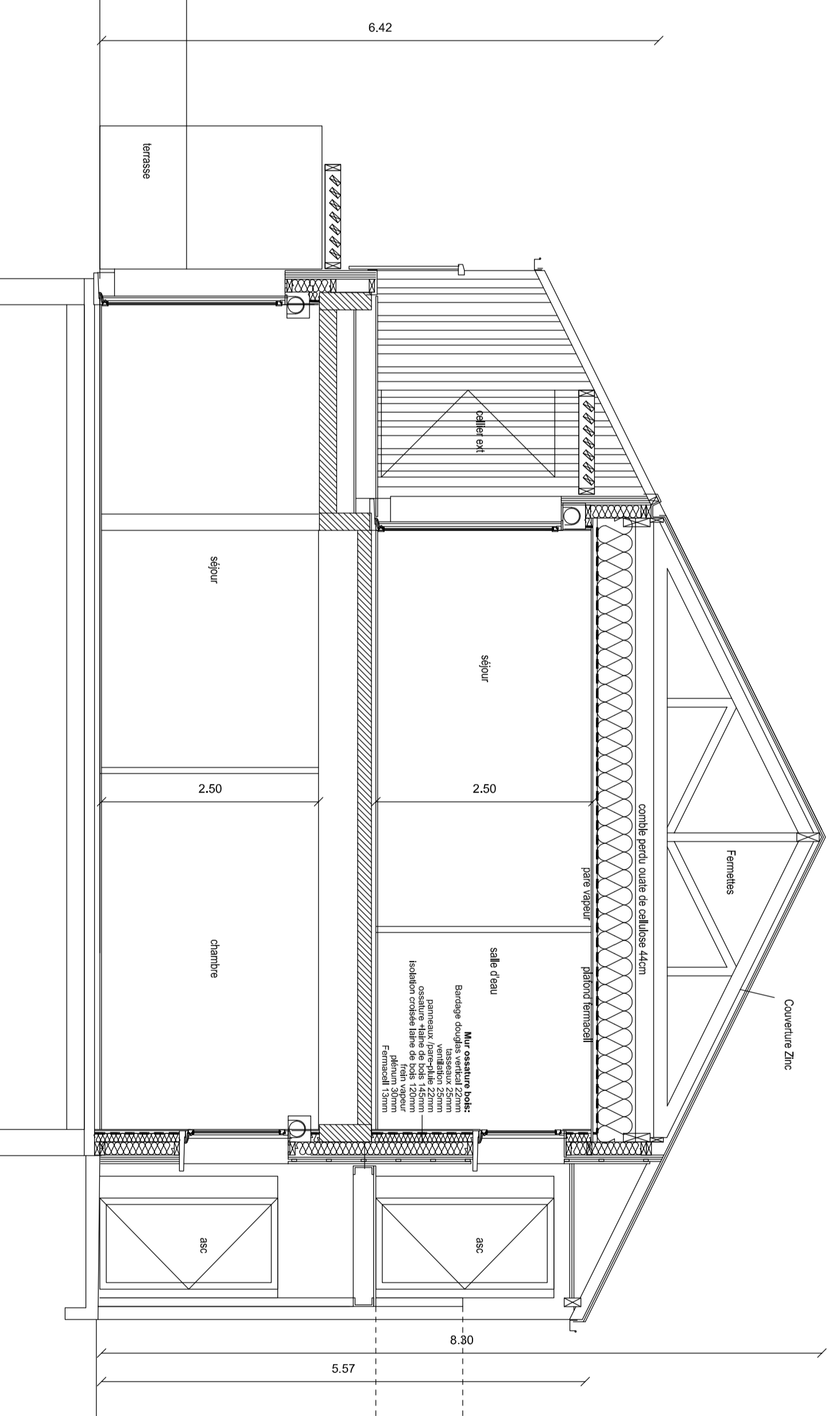
COUPE LONGITUDINALE BATIMENT A



COUPE LONGITUDINALE BATIMENT B



COUPE TRANSVERSALE BATIMENT C et D



COUPE TRANSVERSALE BATIMENT A



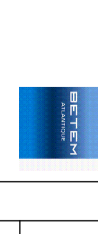
**RESIDENCE SERGE ET ANDREE LE GROU**  
Rouez en Champagne



**SOCOTEC**



**MARCHES**



**PROCES5**



**AVANCE**

**LOGEMENTS BATIMENTS A, B et C**  
**COUPES**

14dha26	12 / 2015	1/50			
---------	-----------	------	--	--	--

**PLANS**  
**MARCHES**

**111 DET**